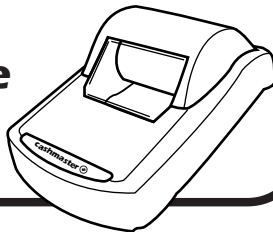


CP1/3 Printer user guide



Depending on the model of Cashmaster printer you have (CP1 or CP3) please follow the instructions below:

CP1

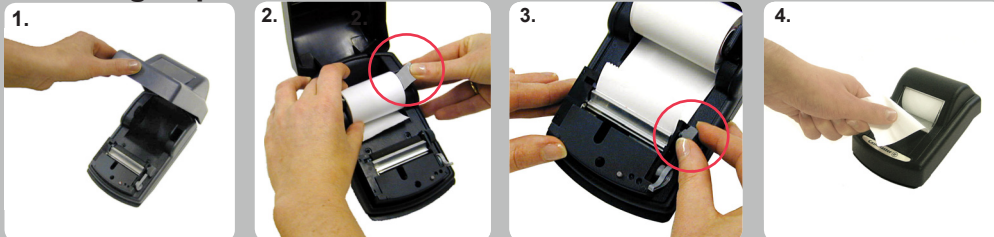
1. Connect the printer to your Cashmaster using the serial cable provided.

CP3

1. Connect the printer to your Cashmaster using the serial cable provided.
2. Plug the AC adaptor into the power supply socket and switch on the mains supply.



Installing Paper



1. Lift open the cover to reveal the paper chamber.
2. Push the paper support to the right and insert the roll.
3. Lift the print head lever and feed the paper under the roller.

Rotate the roller wheel to feed the paper.

The print head lever must now be fully lowered (pushed back) for the printer to operate.

4. Close the cover, feeding the paper through slot.
Tear off the excess paper.



Feed Key

Press the feed key to automatically feed the paper through.



Paper Feed Path

Also shown inside printer top cover.

